

111 WEST 57TH STREET  
NEW YORK, NY 10019

DOB PAA  
3.27.15

JDS  
DEVELOPMENT  
GROUP

JDS DEVELOPMENT GROUP  
10A WEST AVENUE, 11TH FLOOR  
NEW YORK, NY 10011  
NY 646 823 3000

sh p

ARCHITECT

SHoP ARCHITECTS, P.C.  
220 BROADWAY, 11TH FLOOR  
NEW YORK, NY 10005  
NY 212 669 8000

STRUCTURAL ENGINEER

WSP CANOTON DESIGN  
220 EAST 43RD STREET  
NEW YORK, NY 10017  
NY 212 697 5986

MEP ENGINEER

JACOBI, BALM & BOLLES  
40 RINE STREET, 10TH FLOOR  
NEW YORK, NY 10003  
NY 212 509 9333

CIVIL ENGINEER

AKRF ENGINEERING, P.C.  
40 PARK AVE, 20TH, 7TH FLOOR  
NEW YORK, NY 10003  
NY 646 388 8029

ACOUSTICS

LONGMAN LINDSEY  
40 WEST 30TH STREET, 4TH FLOOR  
NEW YORK, NY 10001  
NY 917 308 3380

INTERIORS

STUDIO SCORFIELD  
300 LAFAYETTE STREET  
NEW YORK, NY 10001  
NY 212 475 1366

FACADE

BLURO HARPOLD  
100 BROADWAY  
NEW YORK, NY 10005  
NY 212 254 2825

VERTICAL TRANSPORTATION

VAN DEUSEN & ASSOCIATES  
6 BROAD STREET, SUITE 804  
LYNNSTON, MA 01903  
MA 617 368 8000

RESTORATION

JAN HRD POKORNY ASSOCIATES  
30 WEST 17TH STREET, FLOOR 10A  
NEW YORK, NY 10011  
NY 212 260 0482

GEO TECH

MRICE  
200 WEST 47TH STREET, 4TH FLOOR  
NEW YORK, NY 10018  
NY 917 330 0000

LIGHTING

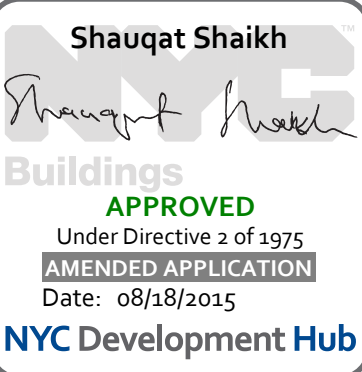
CONSERVATORIE INTERNATIONAL  
130 WALKER STREET, 7TH FLOOR EAST  
NEW YORK, NY 10013  
NY 212 255 4402



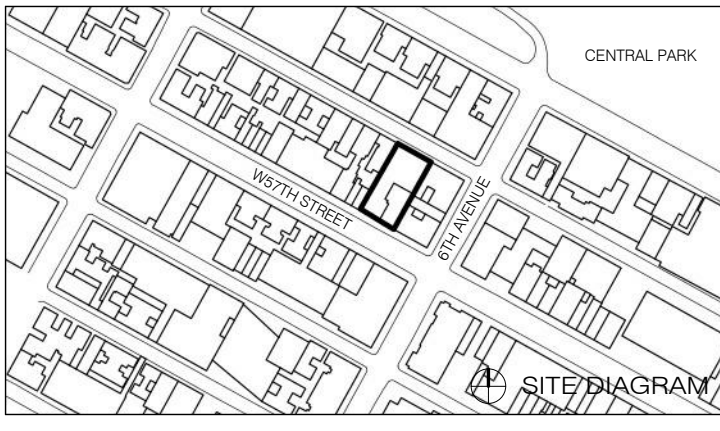
PROPERTY MARKETS GROUP  
1 EAST 17TH STREET, 2ND FLOOR  
NEW YORK, NY 10003  
NY 212 610 2000

CURRENT ISSUE

DOB PAA



111 WEST 57TH  
STREET  
111 WEST 57TH STREET  
NEW YORK, NY 10019



|   |         |                |
|---|---------|----------------|
| 1 | 3.27.15 | DOB PAA        |
|   | 5.1.14  | DOB FILING SET |

| NO. | DATE | REVISION |
|-----|------|----------|
|-----|------|----------|

THESE DRAWINGS ARE INSTRUMENTS OF SERVICE AND AS SUCH MAY NOT BE USED FOR OTHER PROJECTS, FOR ADDITION TO THIS PROJECT OR COMPLETION OF THIS PROJECT BY OTHERS.  
COPYRIGHT © 2015 SHoP ARCHITECTS PC. ALL RIGHTS RESERVED.

DRAWING TITLE

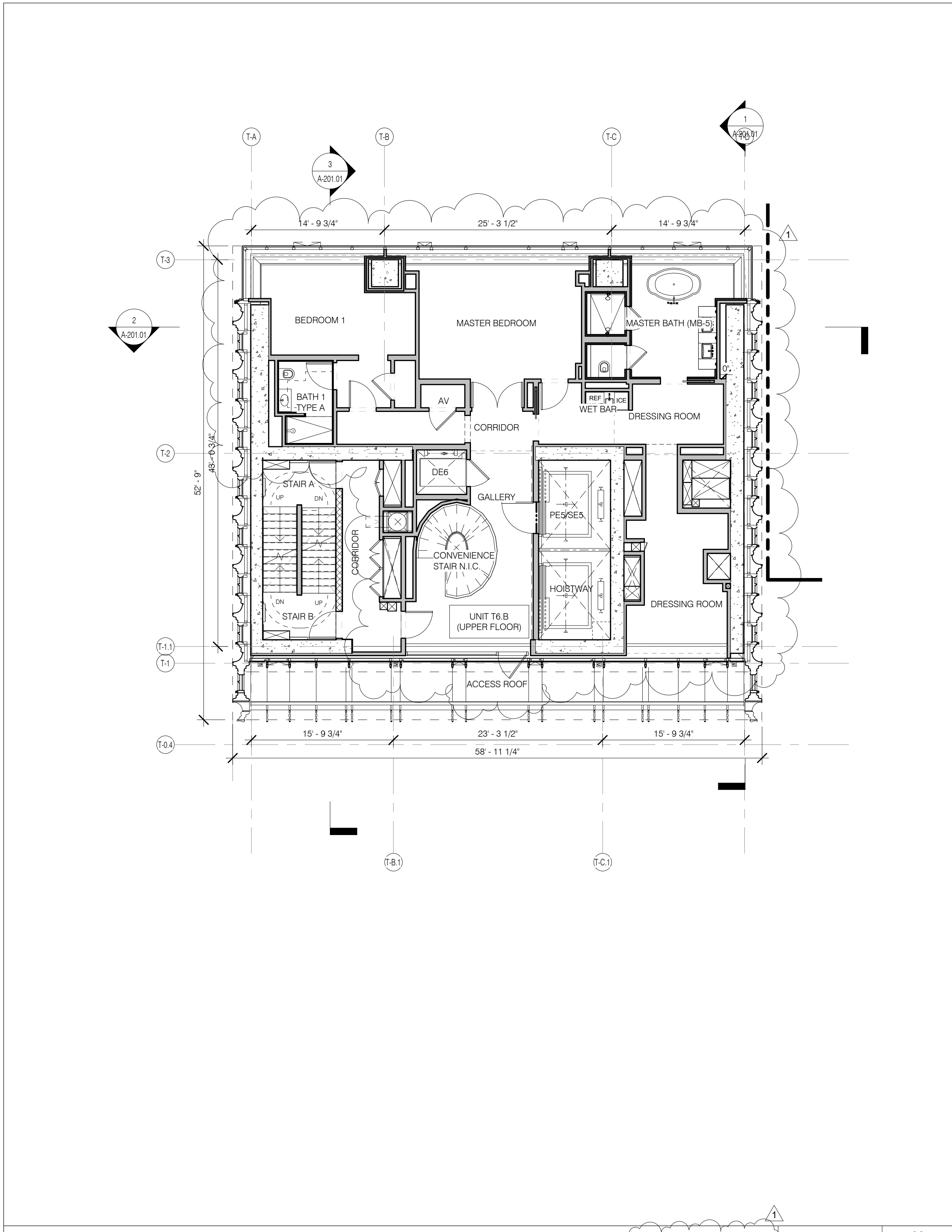
TITLE SHEET

|                  |           |         |
|------------------|-----------|---------|
| SEAL & SIGNATURE | DATE      | 3.27.15 |
| PROJECT NO.      | 130607    |         |
| DRAWN BY         | SHoP      |         |
| CHECKED BY       | SHoP      |         |
| DOB NO.          | 121332968 |         |
| DRAWING NUMBER   |           |         |

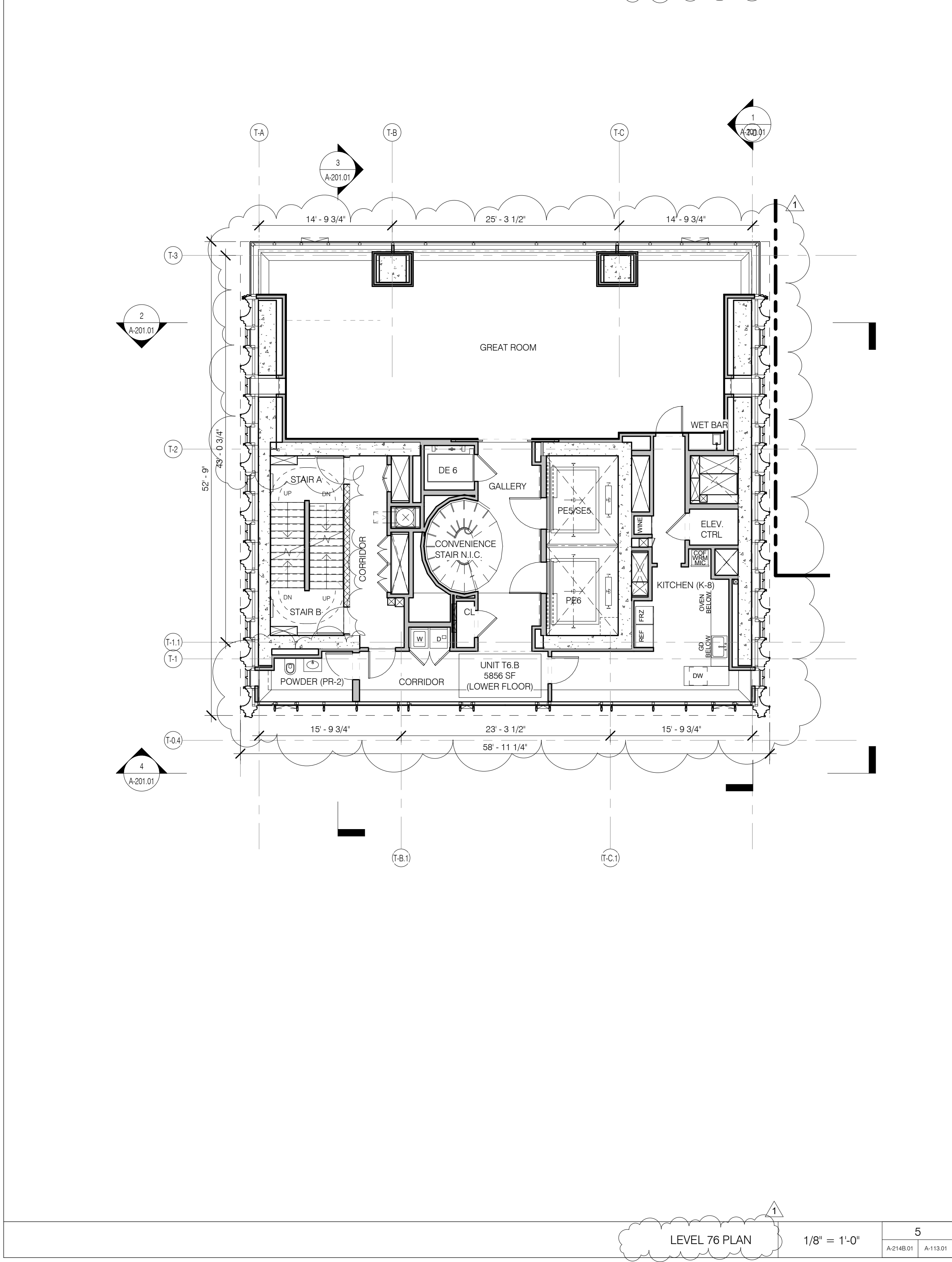


T-000.01

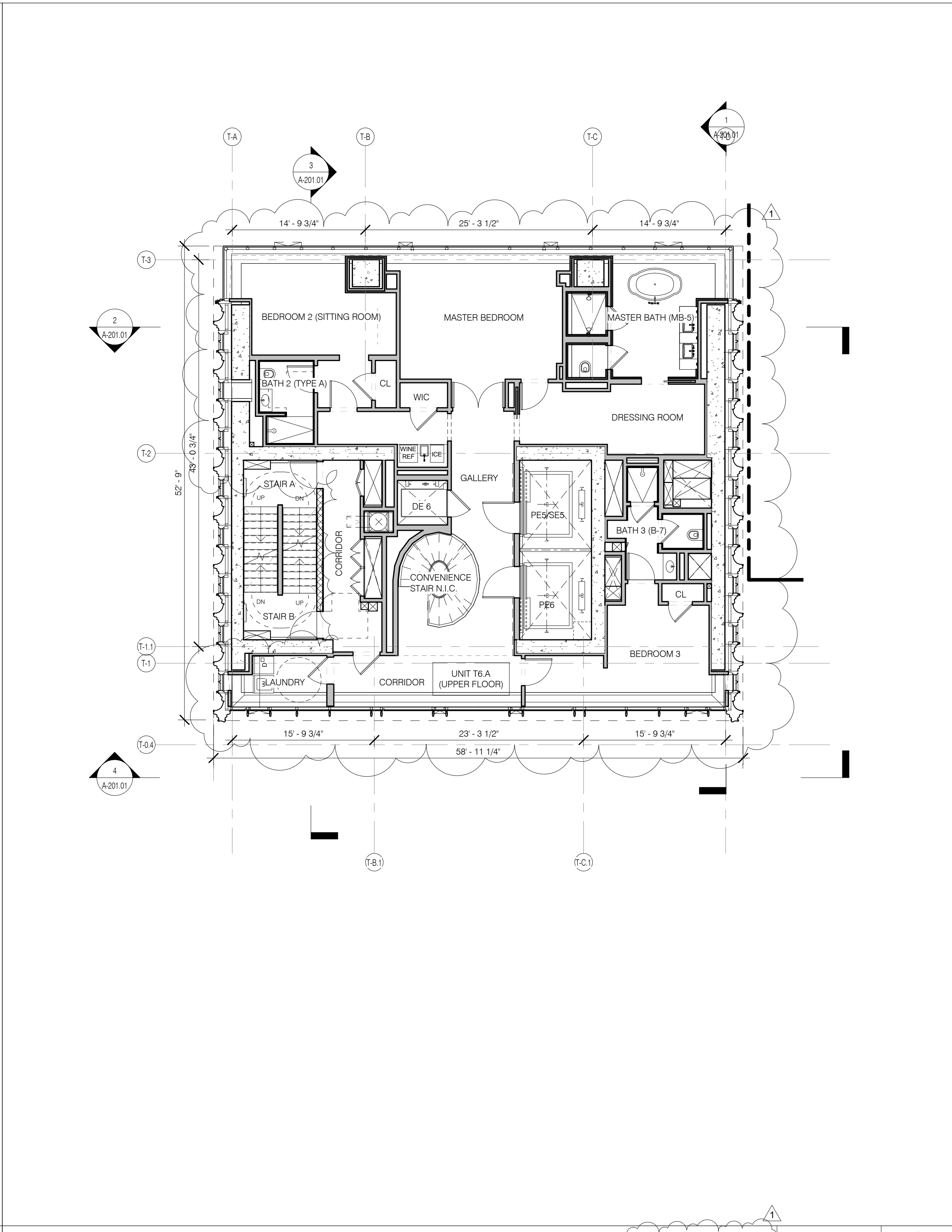




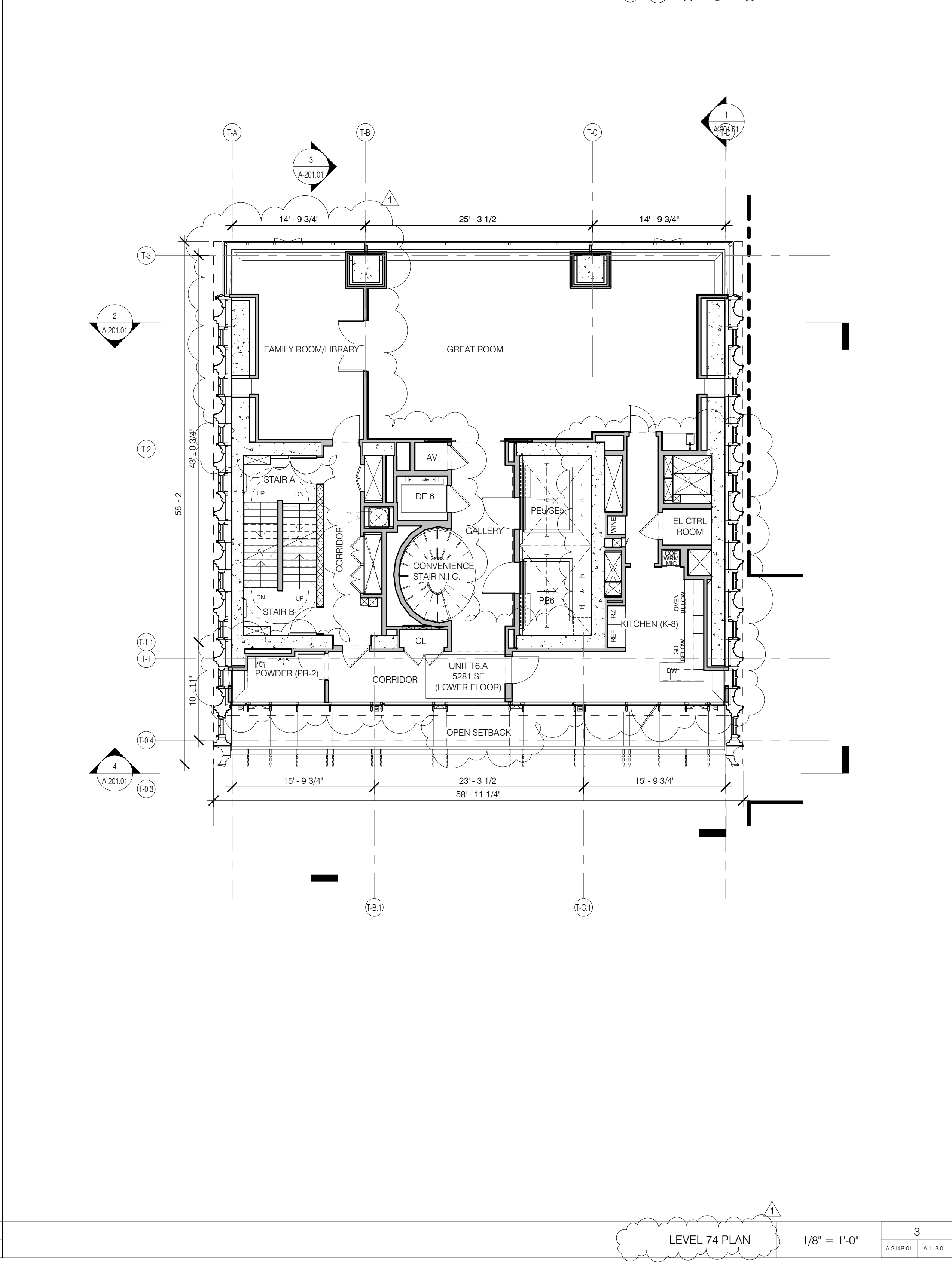
LEVEL 77 PLAN 1/8" = 1'-0" 06 A-214B(1) A-113(1)



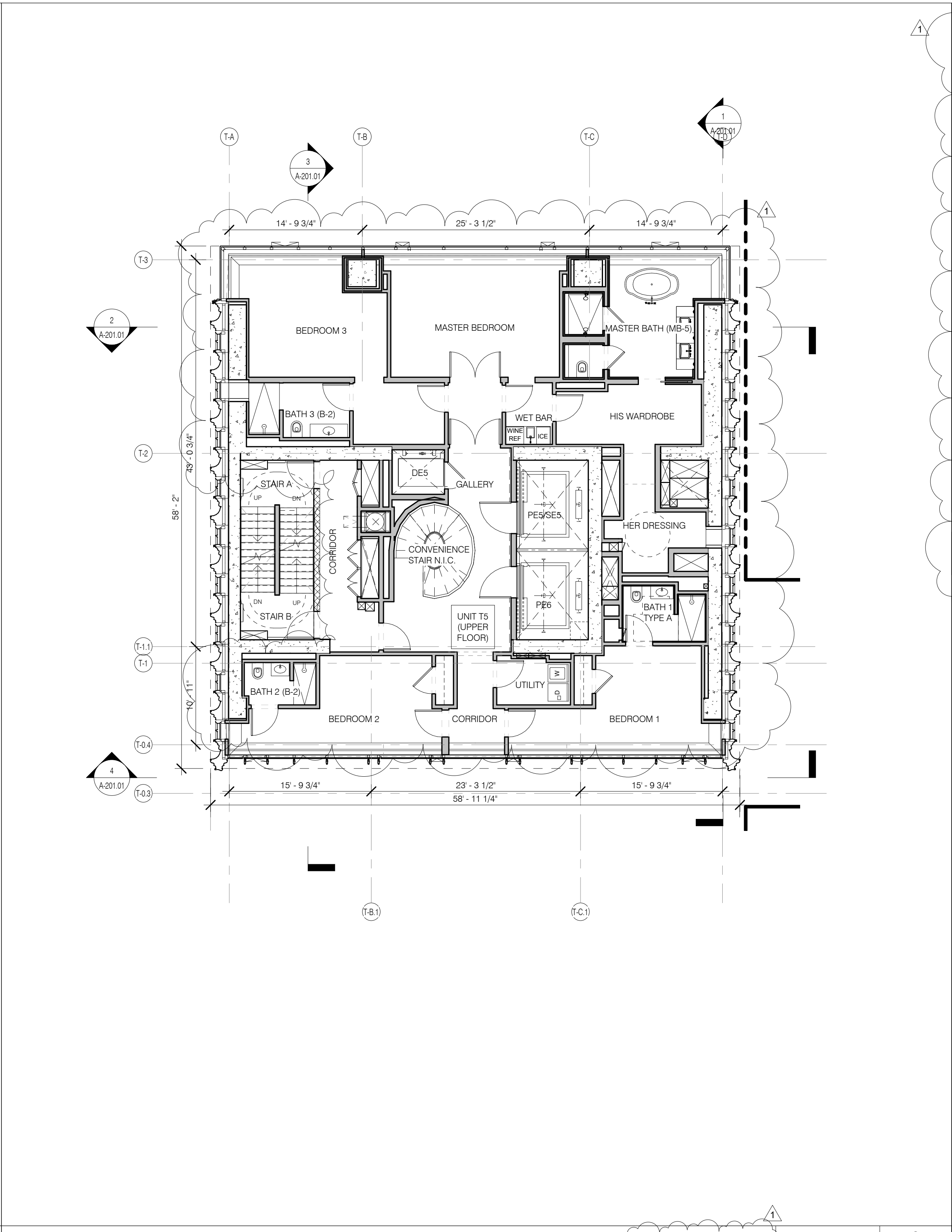
LEVEL 76 PLAN 1/8" = 1'-0" 5 A-214B(1) A-113(1)



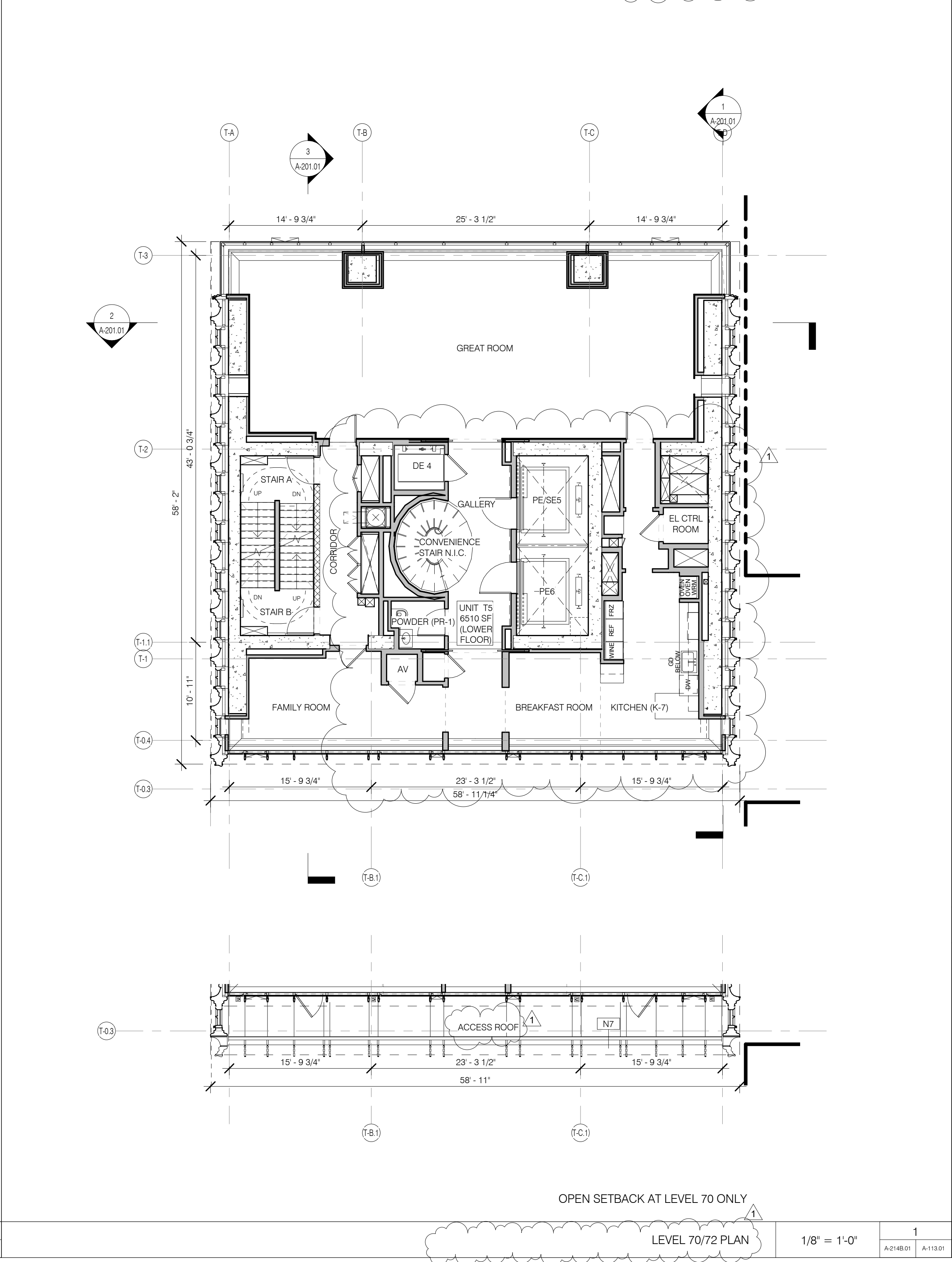
LEVEL 75 PLAN 1/8" = 1'-0" 4 A-214B(1) A-113(1)



LEVEL 74 PLAN 1/8" = 1'-0" 3 A-214B(1) A-113(1)



LEVEL 71/73 PLAN 1/8" = 1'-0" 2 A-214B(1) A-113(1)



LEVEL 70/72 PLAN 1/8" = 1'-0" 1 A-214B(1) A-113(1)

- GENERAL NOTES
- G1 ALL EXISTING CONDITIONS TO BE VERIFIED IN FIELD. DRAWINGS OF EXISTING COMPONENTS ARE ILLUSTRATIVE AND NOT BASED ON DETAILED SURVEY. IF DISCREPANCY FOUND NOTIFY ARCHITECT. DEMOLITION NOT INCLUDED IN SET.
- G2 INTERIOR FIT OUT NOT INCLUDED IN DESIGN SET
- G3 PROJECT 0.0 - 03.1 MSD
- G4 STRUCTURAL GRID BASED ON ORIGINAL ARCHITECTURAL DRAWINGS
- G5 REFER TO RESTORATION DRAWINGS (R-1) FOR RESTORATION WORK ON EXISTING BUILDING INCLUDING, BUT NOT LIMITED TO: REPAIR, WATERPROOFING, REMOVALS, DEMOLITION AND ANY HAZARDOUS MATERIALS RELATED TO REPLACEMENT
- G6 NON-PRESSURIZED EGRESS STAIR THROUGHOUT
- G7 ALL FLOOR ELEVATIONS IN STEREWAY BUILDING ASSUMED TO BE 1" BELOW FLOOR DATUM PER HISTORIC VHS DRAWINGS. VP: ALL NEW SLAB IN STEREWAY PORTION OF PROJECT TO BE ALIGNED WITH EXISTING TOP OF SLAB-FILL, UNO
- G8 SEE MECHANICAL AND ARCHITECTURAL FLOOR PLANS FOR HOUSEKEEPING AND LOCATIONS. SEE SHEET A-120.00 FOR TOPPING AND DRAIN LOCATIONS
- G10 ALL ELEVATIONS ARE FROM TOP OF SLAB
- G11 LOCATION AND SIZE OF ANCHOR POCKETS TO BE COORDINATED BY GC WITH CURTAINWALL VENDOR
- G12 SEE DRAWING G-200 FOR ABBREVIATIONS, SYMBOLS, AND MATERIAL LEGEND
- G13 ALL STEEL CLEANED AND PRIMED FOR HIGH PERFORMANCE PAINT SYSTEM T20
- G14 CONTRACTOR IS RESPONSIBLE FOR LOCATING AND COORDINATING PRESETS FOR MEP/FP HANGING LOAD
- G15 ALL UNIT INTERIOR PASSAGE DOORS ARE 36" WIDE, LKN

- KEY NOTES
- N7 GLASS PARAPET

|                        |   |              |
|------------------------|---|--------------|
| PROPERTY MARKETS GROUP | 1 EAST 17TH STREET, 2ND FLOOR<br>NEW YORK, NY 10003 | 212.810.2000 |
| CURRENT ISSUE          |   |              |
| DOB PAA                |   |              |

JDS DEVELOPMENT GROUP

JDS DEVELOPMENT GROUP

100 WEST 57TH STREET, 4TH FLOOR  
NEW YORK, NY 10019

212.842.3000

sh p

ARCHITECT

SHMP ARCHITECTS, P.C.

220 BROADWAY, 11TH FLOOR  
NEW YORK, NY 10007

212.868.9000

STRUCTURAL ENGINEER

YUSEP CANTOR SENIOR

220 EAST 45TH STREET  
NEW YORK, NY 10017

212.897.9888

MEP ENGINEER

JAROSLAW BAJAM & BOLLER

400 WEST 4TH STREET, 10TH FLOOR  
NEW YORK, NY 10014

212.550.0000

CIVIL ENGINEER

AKRIF ENGINEERING, P.C.

400 WEST 4TH STREET, 10TH FLOOR  
NEW YORK, NY 10014

212.550.0000

ACOUSTIC

LONGMAN LINDSEY

400 WEST 4TH STREET, 10TH FLOOR  
NEW YORK, NY 10014

212.550.0000

INTERIORS

STUDIO SHARP

300 WALKER STREET, 7TH FLOOR EAST  
NEW YORK, NY 10002

212.475.2000

FACADE

BURROUGHS HARRPOLD

100 BROADWAY  
NEW YORK, NY 10005

212.234.2025

VERTICAL TRANSPORTATION

VAN DERBEEK & ASSOCIATES

100 WEST 57TH STREET, 4TH FLOOR  
NEW YORK, NY 10019

212.250.0000

RESTORATION

JAN HIRSH POKORNY ASSOCIATES

300 WEST 17TH STREET, 10TH FLOOR  
NEW YORK, NY 10011

212.250.0000

GEOTECH

 MTRC | 200 WEST 4TH STREET, 4TH FLOOR NEW YORK, NY 10014 | 212.250.0000 || LIGHTING | CONSERVATIVE INTERNATIONAL | 100 WALKER STREET, 7TH FLOOR EAST NEW YORK, NY 10002 | 212.475.2000 |

111 WEST 57TH STREET

111 WEST 57TH STREET

NEW YORK, NY 10019

Shauqat Shaikh

Building

APPROVED

Under Directive 2 of 1975

DATED 08/20/2015

NYC Development Hub

|     |         |               |
|-----|---------|---------------|
| 1   | 3.27.15 | DOB PAA       |
| 2   | 3.1.14  | DOB PLING SET |
| NO. | DATE    | REVISION      |

THESE DRAWINGS ARE INSTRUMENTS OF SERVICE AND AS SUCH MAY NOT BE USED FOR OTHER PROJECTS, FOR ADDITIONS TO THIS PROJECT OR FOR COMPLETION OF THIS PROJECT BY OTHERS.

Copyright © 2015 SHMP ARCHITECTS PC. ALL RIGHTS RESERVED.

LEGEND

0 2' 4' 6' 10'

EXISTING WALL TO REMAIN

NEW CONSTRUCTION

RETAIL TENANT FITOUT

INTERIOR LANDMARK

NO CHANGE

OPEN GRATING

FLOOR KEY PLANS LEVELS 70-77

SEAL & SIGNATURE

DATE

3.27.15

PROJECT NO.

130007

DRAWN BY

SH-KUP

CHECKED BY

SH-KUP

DOB NO.

121332000

DRAWING NUMBER

A-113.01



